



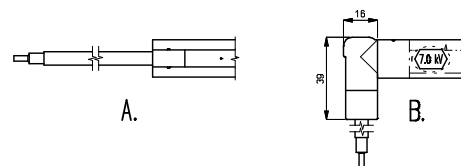
# MEJ

Simco-Ion offers a very wide range of anti-static bars. They all have properties, often specifically designed for the application where they are being used. MEB / MEJ anti-static bars are often used on production machines where short range ionisation is possible and where no moving machine parts are interfering the ionisation. The properties of this Simco-Ion antistatic bar are the same as those of type MEB, except that the MEJ type is round. Therefore mounting this anti-static bar via holes in the machine frame is possible.

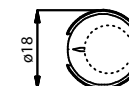
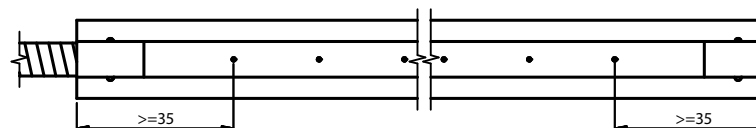
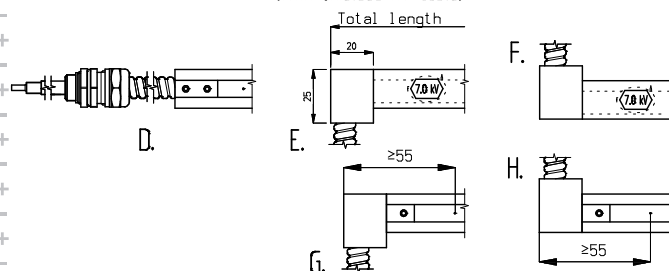
## Features:

- ✦ Compact round shape
- ✦ Optional right angle cable connections
- ✦ Close range neutralisation

(With standard HV-cable)



(With shielded HV-cable)



Technical drawing MEJ

## Simco-Ion Netherlands

Postbus 71  
Lochem, The Netherlands NL-7240 AB  
Tel: +31 (0)573 288333  
Fax: +31 (0)573 257319  
general@simco-ion.nl  
www.simco-ion.nl

## Technical specifications

Working distance	30 mm max.
Housing material	anodised aluminum
Inner bar material	PVC
Emitter pins	Special alloy
Cable	metal shielded
Weight	0,56 kg/m
Ambient temperature	0- 55 °C
Use circumstances	industrial
Options	right angle cable exit
Operating voltage	7 kV AC
Suitable power unit	A2A7S/ MPM
Maxium lenght	5800 mm